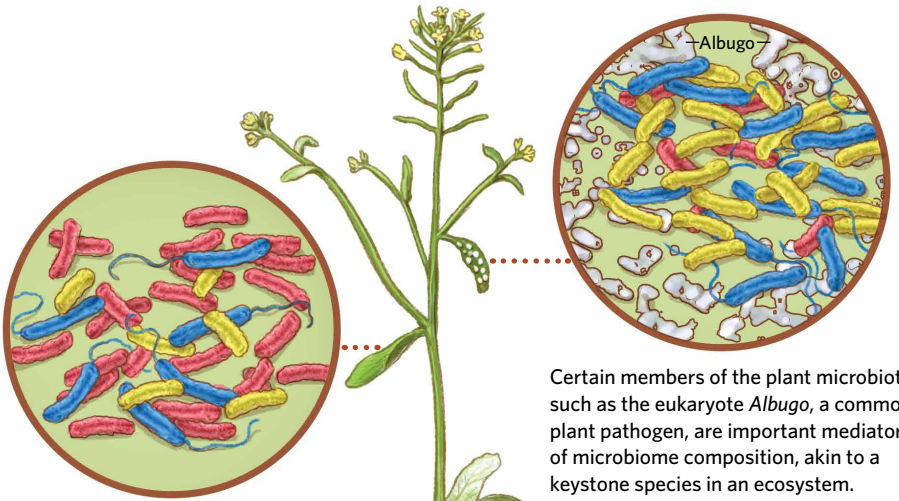


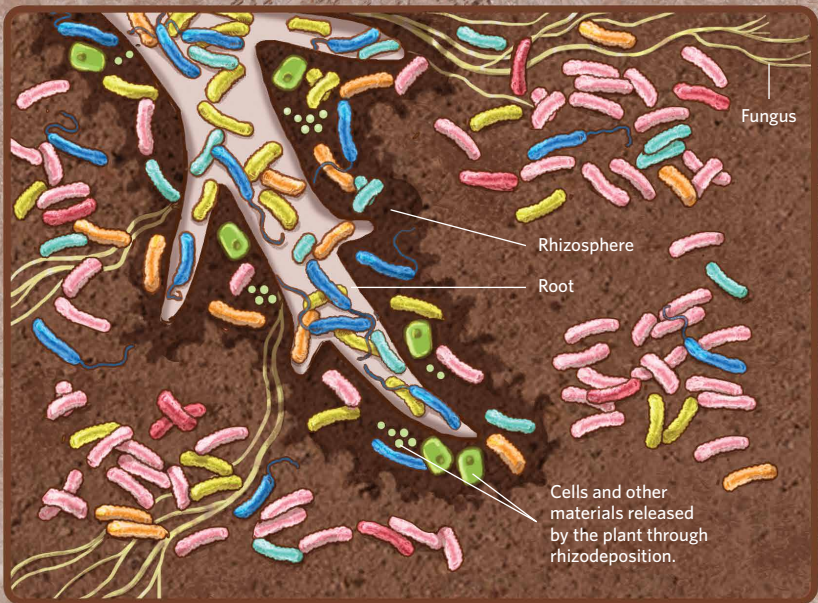
PLANTS' MICROBIAL COMMUNITIES

Like animals, plants host communities of microbes that influence a wide variety of their biological processes. Recent surveys of the plant microbiome have begun to document which species are present—including not just bacteria, but fungi and microscopic eukaryotes as well—and how they affect the plant's health and functioning.



Certain members of the plant microbiota, such as the eukaryote *Albugo*, a common plant pathogen, are important mediators of microbiome composition, akin to a keystone species in an ecosystem.

- Acidobacteria
- Actinobacteria
- Bacteroidetes
- Firmicutes
- Proteobacteria
- Other



Plant cell material and organic compounds released by roots promote the growth of certain bacteria in the general soil microbial community. The plant's genotype further fine-tunes the bacterial community that grows on, in, and around its roots.